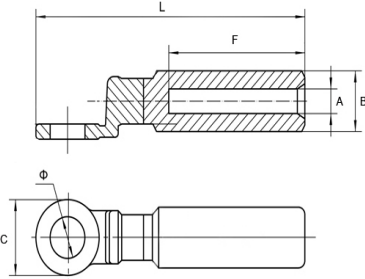
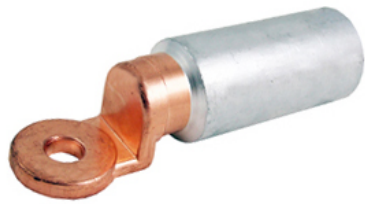


A3

Bimetallic Compression Lugs and Joints



Bimetallic Compression Lugs and Joints



Bimetallic Al/Cu Compression Cable Lugs

Features

- Friction welding
- Manufactured according to EDF HN68S90
- Greased and Capped

Material:

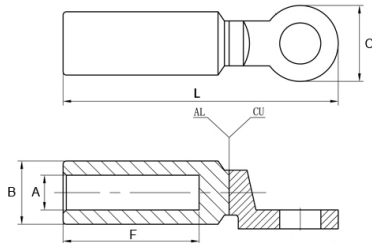
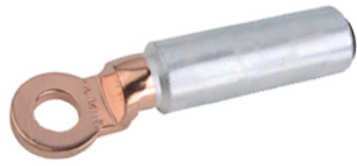
- Cu ≥ 99.9%, Al ≥ 99.5%

Surface:

- Bright

Part No.	Item	Cross Section mm ²	Size of Bolt Φ	Dimension(mm)				
				A	B	C	F	L
A050101	C0AU-16	16	M 10	5.5	16.0	21.0	43.0	85.0
A050102	C0AU-25	25	M 10	6.5	16.0	21.0	43.0	85.0
A050103	C0AU-35	35	M 10	8.0	16.0	21.0	43.0	85.0
A050104	C1AU-50	50	M 12	9.0	20.0	26.5	43.0	90.0
A050105	C1AU-70	70	M 12	11.0	20.0	26.5	43.0	90.0
A050106	C1AU-95	95	M 12	12.5	20.0	26.5	43.0	90.0
A050107	C2AU-120	120	M 12	13.7	25.0	26.5	59.0	115.0
A050108	C2AU-150	150	M 12	15.5	25.0	30.0	59.0	115.0
A050109	C4AU-185	185	M 12	17.0	32.0	30.0	59.0	115.0
A050110	C4AU-240	240	M 12	19.5	32.0	30.0	59.0	115.0
A050111	C5AU-300	300	M 16	23.3	40.0	35.0	93.0	160.0
A050112	C5AU-400	400	M 16	26.0	40.0	35.0	93.0	160.0
A050113	C6AU-500	500	M 16	29.1	47.0	60.0	94.0	200.0
A050114	C6AU-630	630	M 16	32.5	47.0	60.0	94.0	200.0

Bimetallic Compression Lugs and Joints



Bimetallic Al/Cu Compression Cable Lugs

Features

- Friction welding
- Dimensions according to EDF HN 68S90
- Greased and Capped

Material:

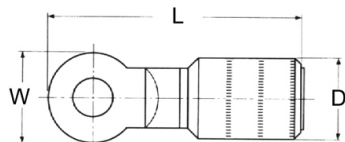
- Cu ≥ 99.9%, Al ≥ 99.5%

Surface:

- Bright

Part No.	Item	Cross Section mm ²	Size of Bolt Φ	Dimension(mm)				
				A	B	C	F	L
A050201	C0AU-16A	16	M 10	5.5	16.0	20.0	43.0	80.0
A050202	C0AU-25A	25	M 10	6.5	16.0	20.0	43.0	80.0
A050203	C0AU-35A	35	M 12	8.0	16.0	25.0	43.0	86.0
A050204	C1AU-50A	50	M 12	9.0	20.0	25.0	43.0	86.0
A050205	C1AU-70A	70	M 12	11.0	20.0	25.0	43.0	86.0
A050206	C1AU-95A	95	M 12	12.5	20.0	25.0	43.0	86.0
A050207	C2AU-120A	120	M 12	13.7	25.0	30.0	59.0	111.0
A050208	C2AU-150A	150	M 12	15.5	25.0	30.0	59.0	111.0
A050209	C4AU-185A	185	M 12	17.0	32.0	30.0	59.0	111.0
A050210	C4AU-240A	240	M 12	19.5	32.0	30.0	59.0	111.0
A050211	C5AU-300A	300	M 16	23.5	40.0	36.0	93.0	158.0
A050212	C5AU-400A	400	M 16	26.0	40.0	36.0	93.0	158.0

Bimetallic Compression Lugs and Joints



Bimetallic Al/Cu Compression Cable Lugs

Features

- Friction welding
- Manufactured according to NFC 63-061
- CLASS B standard.

Material:

- Cu≥99.9% Al≥99.5%

Surface:

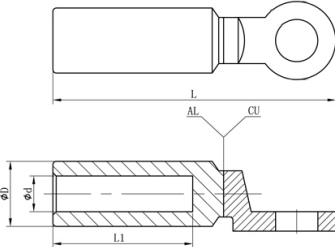
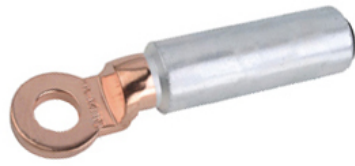
- Bright

Part No.	Item	Cross Section mm ²	Size of Bolt Φ	Dimension(mm)				
				D	d	W	T	L
A050301	C0AU 35 FC	35	M 8	16	8.0	16.5	4.5	67
A050302	C1AU 50 FC	50	M 8	16	9.0	20.0	4.5	67
A050303	C1AU 70 FC	70	M 10	20	11.0	20.0	4.5	67
A050304	C1AU 95 FC	95	M 10	20	12.5	20.0	4.5	67
A050305	C2AU 120 FC	120	M 10	20	13.7	20.0	4.5	67
A050306	C2AU 150 FC	150	M 12	27	15.5	30.0	5.0	80
A050307	C4AU 185 FC	185	M 12	27	17.0	30.0	5.0	80
A050308	C4AU 240 FC	240	M 12	27	19.5	30.0	6.0	87
A050309	C5AU 300 FC	300	M 14	32	22.0	35.0	6.0	90



Part No.	Item	Cross Section mm ²	Size of Bolt Φ	Dimension(mm)				
				D	d	W	T	L
A050401	ACX-C 150 FC	150	M 10	27	15.5	25	5	76
A050402	ACX-C 185 FC	185	M 10	27	17.0	25	5	76
A050403	ACX-C 240 FC	240	M 10	27	19.5	30	6	76
A050404	ACX-C 300 FC	300	M 10	32	22.0	30	6	85

Bimetallic Compression Lugs and Joints



Bimetallic Al/Cu Compression Cable Lugs

Features

- Friction welding

Material:

- Cu ≥ 99.9% Al ≥ 99.5%

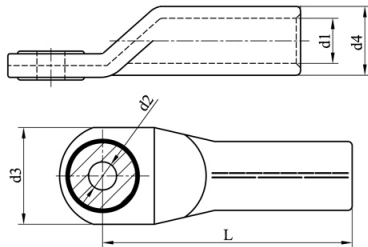
Surface:

- Bright

*Also available for other size of bolt.

Part No.	Item	Cross Section mm ²	Size of Bolt Φ	Dimension(mm)			
				D	d	L	L1
A050501	BL 16-10	16	M 10	16	5.5	83.0	42.0
A050502	BL 25-10	25	M 10	16	6.5	83.0	42.0
A050503	BL 35-10	35	M 10	16	8.0	83.0	42.0
A050504	BL 50-12	50	M 12	20	9.0	90.0	43.0
A050505	BL 70-12	70	M 12	20	11.0	90.0	43.0
A050506	BL 95-12	95	M 12	20	12.5	90.0	43.0
A050507	BL 120-12	120	M 12	25	13.5	115.0	60.0
A050508	BL 150-12	150	M 12	25	15.5	115.0	60.0
A050509	BL 185-12	185	M 12	32	17.5	125.0	60.0
A050510	BL 240-12	240	M 12	32	19.5	125.0	60.0
A050511	BL 300-12	300	M 12	34	23.5	130.0	62.0
A050512	BL 400-12	400	M 12	34	26.5	130.0	62.0
A050513	BL 500-16	500	M 16	41	29.0	166.0	93.0
A050514	BL 630-16	630	M 16	47	32.5	180.0	94.0

Bimetallic Compression Lugs and Joints



Bimetallic Al/Cu Compression Cable Lugs

Features

- With Cu eye in screw-on area

Material:

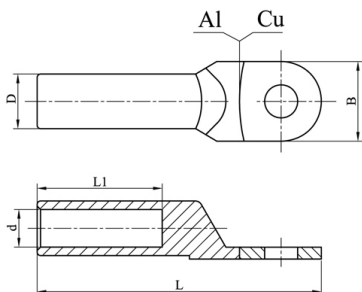
- Cu≥99.9%, Al≥99.5%

Surface:

- Bright

Part No.	Item	Cross Section mm ²	Size of Bolt Φ	Dimensions(mm)				
				L	d4	d1	d3	d2
A050601	ATL10-6	10	M 6	52.0	10.0	5.0	18.0	6.5
A050602	ATL10-8		M 8	52.0	10.0	5.0	22.0	8.5
A050603	ATL16-8	16	M 8	52.0	12.0	5.8	22.0	8.5
A050604	ATL16-10		M 10	52.0	12.0	5.8	25.0	10.5
A050605	ATL25-8	25	M 8	60.0	12.0	6.8	22.0	8.5
A050606	ATL25-10		M 10	60.0	12.0	6.8	25.0	10.5
A050607	ATL25-12		M 12	60.0	12.0	6.8	27.5	13.0
A050608	ATL35-8	35	M 8	67.0	14.0	8.0	22.0	8.5
A050609	ATL35-10		M 10	67.0	14.0	8.0	25.0	10.5
A050610	ATL35-12		M 12	67.0	14.0	8.0	30.0	13.0
A050611	ATL50-8	50	M 8	72.0	16.0	9.8	25.0	8.5
A050612	ATL50-10		M 10	72.0	16.0	9.8	27.0	10.5
A050613	ATL50-12		M 12	72.0	16.0	9.8	30.0	13.0
A050614	ATL70-8	70	M 8	86.0	18.5	11.2	28.0	8.5
A050615	ATL70-10		M 10	86.0	18.5	11.2	29.0	10.5
A050616	ATL70-12		M 12	86.0	18.5	11.2	32.0	13.0
A050617	ATL95-10	95	M 10	90.0	22.0	13.2	32.0	10.5
A050618	ATL95-12		M 12	90.0	22.0	13.2	35.0	13.0
A050619	ATL95-16		M 16	90.0	22.0	13.2	38.0	17.0
A050620	ATL120-10	120	M 10	91.0	23.0	14.7	34.0	10.5
A050621	ATL120-12		M 12	91.0	23.0	14.7	35.0	13.0
A050622	ATL120-16		M 16	91.0	23.0	14.7	38.0	17.0
A050623	ATL150-10	150	M 10	103.0	25.0	16.3	35.0	10.5
A050624	ATL150-12		M 12	103.0	25.0	16.3	35.0	13.0
A050625	ATL150-16		M 16	103.0	25.0	16.3	41.0	17.0
A050626	ATL150-20	185	M 20	103.0	25.0	16.3	44.0	21.0
A050627	ATL185-12		M 12	106.0	28.5	18.3	40.0	13.0
A050628	ATL185-16		M 16	106.0	28.5	18.3	42.0	17.0
A050629	ATL 185-20	240	M 20	106.0	28.5	18.3	46.0	21.0
A050630	ATL240-12		M 12	116.0	32.0	21.0	45.0	13.0
A050631	ATL240-16		M 16	116.0	32.0	21.0	45.0	17.0
A050632	ATL240-20	300	M 20	116.0	32.0	21.0	49.0	21.0
A050633	ATL300-16		M 16	124.0	34.0	23.3	51.0	17.0
A050634	ATL300-20		M 20	124.0	34.0	23.3	51.0	21.0
A050635	ATL400-16	400	M 16	165.0	38.5	26.0	58.0	17.0
A050636	ATL400-20		M 20	165.0	38.5	26.0	58.0	21.0

Bimetallic Compression Lugs and Joints



Bimetallic Al/Cu Compression Cable Lugs

Features

- Friction welding

Material

- Cu≥99.9%, Al≥99.5%

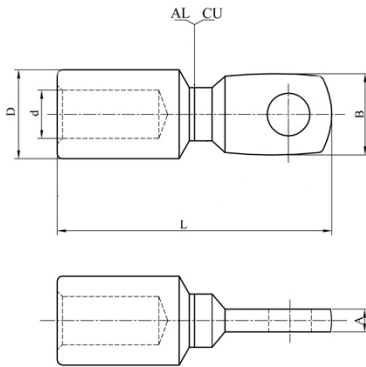
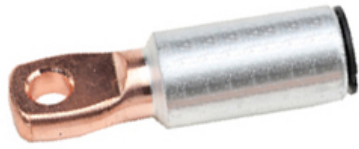
Surface

- Bright

Part No.	Item	Cross Section mm ²	Size of Bolt Φ	Dimensions(mm)				
				D	d	L	L1	B
A050701	DTL 10-6	10	M 6	9.00	4.80	62.00	23.00	13.50
A050702	DTL 16-8	16	M 8	10.00	5.80	70.00	32.00	16.00
A050703	DTL 25-8	25	M 8	12.00	7.20	75.00	34.00	17.50
A050704	DTL 35-10	35	M 10	14.00	8.50	85.00	40.00	20.00
A050705	DTL 35-12	35	M 12	14.00	8.50	85.00	40.00	20.00
A050706	DTL 50-10	50	M 10	16.00	9.70	90.00	42.00	23.00
A050707	DTL 50-12	50	M 12	16.00	9.70	90.00	42.00	23.00
A050708	DTL 70-12	70	M 12	18.00	11.50	102.00	47.00	26.00
A050709	DTL 95-12	95	M 12	20.00	13.50	112.00	50.00	28.00
A050710	DTL 120-14	120	M 14	22.00	15.00	120.00	53.00	31.00
A050711	DTL 150-14	150	M 14	24.00	16.50	125.00	55.00	35.00
A050712	DTL 185-16	185	M 17	27.00	18.50	133.00	58.00	37.50
A050713	DTL 240-16	240	M 17	30.00	21.00	140.00	60.00	40.00
A050714	DTL 300-18	300	M 18	34.00	23.50	160.00	65.00	44.50
A050715	DTL 400-20	400	M 20	40.00	27.00	170.00	70.00	50.00
A050716	DTL 500-20	500	M 20	47.00	29.00	225.00	85.00	60.00

Bimetallic Compression Lugs and Joints

Bimetallic Al/Cu Compression Cable Lugs



Features

- Friction welding
- Narrow palm for circuit breaker

Material

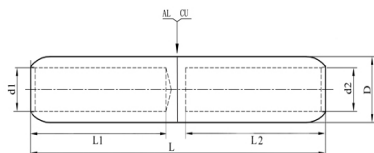
- Cu≥99.9%, Al≥99.5%

Surface

- Bright

Part No.	Item	Cross Section mm ²	Size of Bolt Φ	Dimensions(mm)				
				L	D	d	B	A
A050801	MCCB 10	10	M 8	48.5	12.5	4.5	14.4	4.8
A050802	MCCB 16	16	M 5	68.0	12.5	5.6	14.4	3.0
A050803	MCCB 16	16	M 8	48.5	12.5	5.5	14.4	4.8
A050804	MCCB 25	25	M 8	61.5	12.5	7.0	14.4	4.8
A050805	MCCB 35	35	M 8	61.5	12.5	8.0	14.4	4.8
A050806	MCCB 50	50	M 8	64.5	17.5	9.5	16.7	6.6
A050807	MCCB 70	70	M 8	64.5	17.5	11.0	16.7	6.6
A050808	MCCB 95	95	M 8	67.5	20.0	12.5	19.5	8.4
A050809	MCCB 120	120	M 8	67.5	20.0	13.7	19.5	8.4

Bimetallic Compression Lugs and Joints



Bimetallic Al/Cu Compression Joints

Features

- Friction welding
- Manufactured according to EDF HN 68 S 90

Material

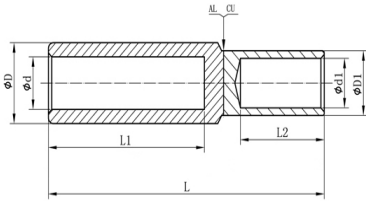
- Cu≥99.9%, Al≥99.5%

Surface

- Bright

Part No.	Item	Cross Section Al/Cu mm ²	Dimensions(mm)					
			D	d1	d2	L1	L2	L
A060101	RJAU-16/16	16/16	16.0	6.0	6.0	42.0	40.0	91.0
A060102	RJAU-25/16	25/16	16.0	7.0	6.0	44.0	42.0	91.0
A060103	RJAU-25/25	25/25	16.0	8.0	7.5	44.0	42.0	91.0
A060104	RJAU-35/16	35/16	20.0	8.5	6.0	52.0	41.5	107.0
A060105	RJAU-35/25	35/25	20.0	8.5	7.0	52.0	41.5	107.0
A060106	RJAU-35/35	35/35	20.0	8.5	8.5	52.0	41.5	107.0
A060107	RJAU-50/25	50/25	20.0	9.7	7.0	52.0	41.5	107.0
A060108	RJAU-50/35	50/35	20.0	9.7	8.5	52.0	41.5	107.0
A060109	RJAU-50/50	50/50	20.0	9.7	9.7	52.0	41.5	107.0
A060110	RJAU-70/35	70/35	20.0	11.5	8.5	52.0	41.5	107.0
A060111	RJAU-70/50	70/50	20.0	11.5	9.7	52.0	41.5	107.0
A060112	RJAU-70/70	70/70	20.0	11.5	11.5	52.0	41.5	107.0
A060113	RJAU-95/35	95/35	20.0	13.5	8.5	52.0	41.5	107.0
A060114	RJAU-95/50	95/50	20.0	13.5	9.7	52.0	41.5	107.0
A060115	RJAU-95/70	95/70	20.0	13.5	11.5	65.0	46.0	133.0
A060116	RJAU-95/95	95/95	20.0	13.5	13.5	65.0	46.0	133.0
A060117	RJAU-120/50	120/50	25.0	15.0	9.7	65.0	46.0	133.0
A060118	RJAU-120/70	120/70	25.0	15.0	11.5	65.0	46.0	133.0
A060119	RJAU-120/95	120/95	25.0	15.0	13.5	65.0	46.0	133.0
A060120	RJAU-120/120	120/120	25.0	15.0	15.0	65.0	46.0	133.0
A060121	RJAU-150/50	150/50	25.0	16.5	9.7	65.0	46.0	133.0
A060122	RJAU-150/70	150/70	25.0	16.5	11.5	65.0	46.0	133.0
A060123	RJAU-150/95	150/95	25.0	16.5	13.5	65.0	46.0	133.0
A060124	RJAU-150/120	150/120	25.0	16.5	15.0	65.0	46.0	133.0
A060125	RJAU-150/150	150/150	25.0	16.5	16.5	65.0	46.0	133.0
A060126	RJAU-185/95	185/95	32.0	18.5	13.5	70.0	46.0	143.5
A060127	RJAU-185/120	185/120	32.0	18.5	15.0	70.0	46.0	143.5
A060128	RJAU-185/150	185/150	32.0	18.5	16.5	70.0	46.0	143.5
A060129	RJAU-185/185	185/185	32.0	18.5	18.5	70.0	46.0	143.5
A060130	RJAU-240/150	240/150	32.0	21.0	16.5	70.0	46.0	143.5
A060131	RJAU-240/185	240/185	32.0	21.0	18.5	70.0	46.0	143.5
A060132	RJAU-240/240	240/240	32.0	21.0	21.0	70.0	46.0	143.5
A060133	RJAU-300/240	300/240	40.0	23.0	21.0	80.0	78.0	180.0
A060134	RJAU-300/300	300/300	40.0	23.0	23.0	80.0	78.0	180.0

Bimetallic Compression Lugs and Joints



Bimetallic Al/Cu Compression Joints

Features

- Friction welding

Material

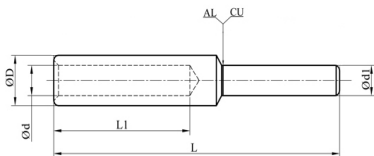
- Cu≥99.9%, Al≥99.5%

Surface

- Bright

Part No.	Item	Cross Section mm ²		Dimension(mm)						
		AL	Cu	D	d	D1	d1	L	L1	L2
A060201	GTL-AL25/Cu10	25	10	16.0	6.4	6.0	4.5	66.5	43.0	13.0
A060202	GTL-AL25/Cu16	25	16	16.0	6.4	8.5	5.5	72.5	43.0	20.0
A060203	GTL-AL35/Cu16	35	16	16.0	8.5	8.5	5.5	72.5	43.0	20.0
A060204	GTL-AL35/Cu25	35	25	16.0	8.5	10.0	7.0	72.5	43.0	20.0
A060205	GTL-AL50/Cu25	50	25	20.0	9.4	10.0	7.0	75.0	43.0	20.0
A060206	GTL-AL50/Cu35	50	35	20.0	9.4	12.5	8.2	75.0	43.0	20.0
A060207	GTL-AL70/Cu35	70	35	20.0	10.9	12.5	8.2	75.0	43.0	20.0
A060208	GTL-AL70/Cu50	70	50	20.0	10.9	14.5	10.0	81.0	43.0	26.0
A060209	GTL-AL95/Cu50	95	50	20.0	12.4	14.5	10.0	81.0	43.0	26.0
A060210	GTL-AL95/Cu70	95	70	20.0	12.4	16.5	11.5	83.0	43.0	27.0
A060211	GTL-AL120/Cu70	120	70	25.0	13.7	16.5	11.5	99.0	59.0	27.0
A060212	GTL-AL120/Cu95	120	95	25.0	13.7	19.0	13.5	107.0	59.0	35.0
A060213	GTL-AL150/Cu95	150	95	25.0	15.5	19.0	13.5	107.0	59.0	35.0
A060214	GTL-AL150/Cu120	150	120	25.0	15.5	21.0	15.5	107.0	59.0	35.0
A060215	GTL-AL185/Cu120	185	120	32.0	17.0	21.0	15.5	107.0	59.0	35.0
A060216	GTL-AL185/Cu150	185	150	32.0	17.0	23.5	17.0	112.0	59.0	40.0
A060217	GTL-AL240/Cu150	240	150	32.0	19.5	23.5	17.0	112.0	59.0	40.0
A060218	GTL-AL240/Cu185	240	185	32.0	19.5	25.5	19.0	115.0	59.0	42.5
A060219	GTL-AL240/Cu240	240	240	32.0	19.5	29.0	21.5	116.0	59.0	43.0
A060220	GTL-AL300/Cu185	300	185	40.0	23.2	25.5	19.0	152.5	93.0	42.5
A060221	GTL-AL300/Cu240	300	240	40.0	23.2	29.0	21.5	153.5	93.0	43.0
A060222	GTL-AL300/Cu300	300	300	40.0	23.2	32.0	24.5	159.5	93.0	49.0
A060223	GTL-AL400/Cu240	400	240	40.0	26.0	29.0	21.5	153.5	93.0	43.0
A060224	GTL-AL400/Cu300	400	300	40.0	26.0	32.0	24.5	159.5	93.0	49.0

Bimetallic Compression Lugs and Joints



Bimetallic Cu/Al Compression Joints

Features

- Friction welding

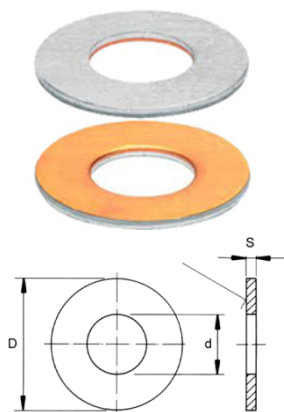
Material

- Cu≥99.9%, Al≥99.5%

Surface

- Bright

Part No.	Item	Cross Section mm ²	Dimension(mm)				
			L	L1	D	d	d1
A060301	EAU-6	6	58.0	29.0	12.0	3.8	5.0
A060302	EAU-10	10	58.0	29.0	12.0	4.5	5.0
A060303	EAU-16	16	58.0	29.0	12.0	5.8	6.0
A060304	EAU-25	25	58.0	30.0	12.0	6.8	6.0
A060305	EAU-35	35	71.0	42.0	14.0	8.0	7.0
A060306	EAU-50	50	74.0	42.0	16.0	9.8	8.0
A060307	EAU-70	70	87.0	51.0	18.5	11.2	10.0
A060308	EAU-95	95	91.0	51.0	22.0	13.2	12.0
A060309	EAU-120	120	97.0	52.0	23.0	14.7	12.0
A060310	EAU-150	150	108.0	60.0	25.0	16.3	12.0
A060311	EAU-185	185	116.0	60.0	28.5	18.3	14.0
A060312	EAU-240	240	128.0	70.0	32.0	21.0	16.0
A060313	EAU-300	300	131.0	70.0	34.0	23.3	18.0



Bimetallic Washers

Features

- Only for use in dry areas
- Other sizes could be customized

Material

- Al, one side copper

Part No.	Item	Size of Bolt Φ	Dimension(mm)		
			D	d	S
A060401	BW-8	M 8	18	8.5	1
A060402	BW-10	M 10	22	11.0	2
A060403	BW-12	M 12	28	13.0	2
A060404	BW-14	M 14	28	15.0	2
A060405	BW-16	M 16	35	17.0	2